

WHY Shangri-La Hotel Bangkok?

Experience

Shangri-La Hotel Bangkok

<https://www.shangri-la.com/bangkok/shangrila/>

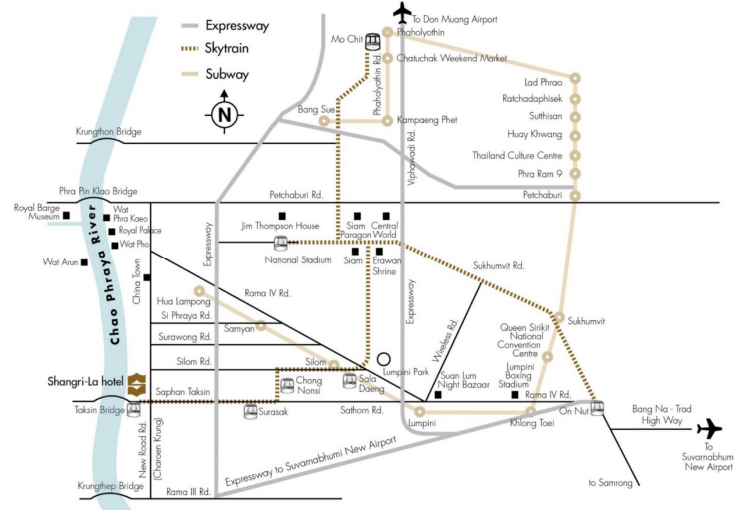
802 guest rooms, 24 serviced apartments, 8 restaurants & bars, 4,149 sqm function space, one Grand Ballroom and 23 meeting rooms, pool, fitness centre, CHI, The Spa. The hotel also has Horizon Cruise that operates a dinner cruise on a daily basis.



Location

<http://www.shangri-la.com/bangkok/shangrila/about/map-directions/>

- The only Hotel along Chao Phraya River with direct access to BTS Skytrain.
- The closest hotel to the major Expressway making Shangri-La Hotel Bangkok the most accessible hotel for guests to the airport, business and leisure locations.
- 2 minutes walk from Saphan Taksin BTS Skytrain station
- 5-8 minutes boat ride to IconSiam and Asiatique The Riverfront
- 10-15 minutes BTS ride to City Centre, Siam Paragon, Central World Exhibition Centre, Erawan Shrine, Platinum Mall, etc.



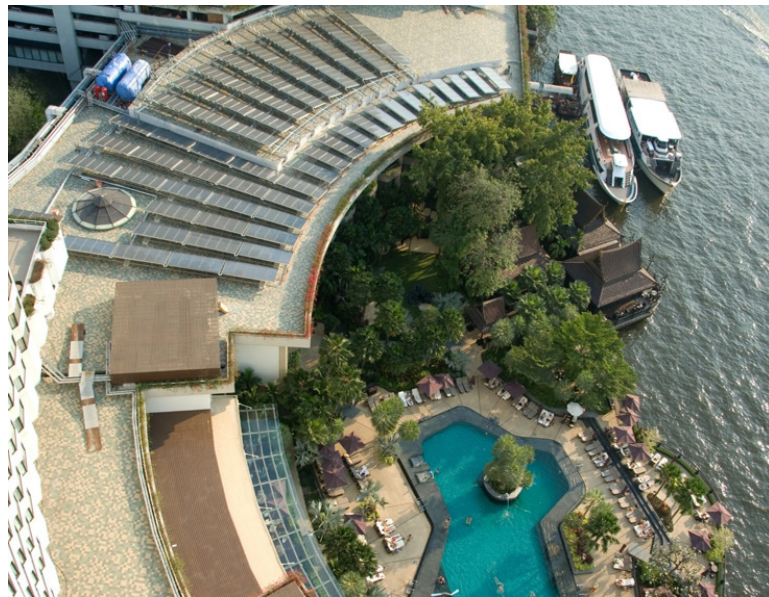


Shangri-La hotel

BANGKOK

Unique

- The only riverside hotel in Bangkok with a private entrance to the Grand Ballroom
- The hotel with the biggest number of function and event spaces (23)
- Thai-inspired décor and contemporary accents guestrooms
- Complimentary high speed broadband internet and Wi-Fi access in all rooms as well as all public areas including meeting rooms
- This first hotel with Solar Panel Water Heating System that can stop 435 metric tonnes of CO2 emissions annually



Function Venues

- The 1,360sqm Grand Ballroom with the ceiling height of 6.5m. can accommodate:
 - 1,600 delegates seated theatre-style
 - 1,500 people for a cocktail reception
 - 1,000 guests for an elegant banquet
- 23 various size of function rooms ranging from 43sqm to 543sqm are available for big or small gatherings.

Dining

<http://www.shangri-la.com/bangkok/shangrila/dining/>

- Salathip
- NEXT2 Café
- Shang Palace
- Horizon Cruise
- The Long Bar
- Chocolate Boutique
- VOLTI restaurant & bar
- Lobby Lounge
- Riverside Lounge

